



GUILDCREST ESTATES



5 Bishop Close  
Margate CT9 4FP

3 2 1 B





GUILDCREST ESTATES

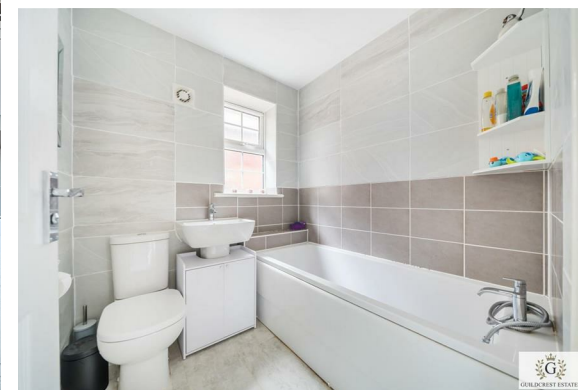
**Bishop Close  
Margate, CT9 4FP  
Asking price £259,000**

**GREAT LOCATION..... VIEWING  
HIGHLY RECOMMENDED .....**

This well-presented, end of terrace family home is centrally located from the sought after Westwood Cross development, nestled between the coastal towns of Margate and Broadstairs.

This stunning home has many benefits, from being light, airy and in good decorative order throughout and would make an ideal first time purchase, downsize move or if you are looking for an investment property to add to your portfolio.

As you step into the property you will find the, good size lounge, downstairs cloakroom, kitchen/diner and a under stairs cupboard for ample storage. The lounge has a window to the front, allowing light to fill the room and stairs leading to the first floor and the kitchen benefits from having modern white gloss wall and base units, a built in oven, hob and space for dishwasher, washing







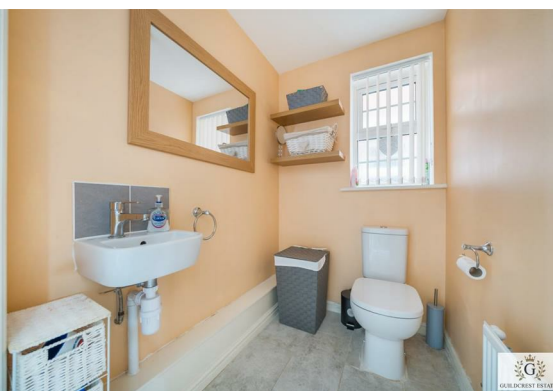
machine and fridge/freezer. The kitchen/dining room is a great size for entertaining with patio doors leading out onto the garden with patio area, lawn and side gate.

The first floor has master bedroom has en suite shower room and large storage cupboard. There are two further bedrooms, a family bathroom with white 3 piece suite and another large storage cupboard on the landing.

The location of this lovely home is close to Westwood Cross shopping centre. Here you will find a hub of superstores, high street shops, restaurants, cafes, a cinema, a casino, which are all within walking distance. There are a good selection of primary, secondary and grammar schools in the local area.

Public transport in the area is fantastic, The Thanet Loop is a regular local bus services and the railway station is also close by. The Thanet Way (A299), links to the M2 motorway.

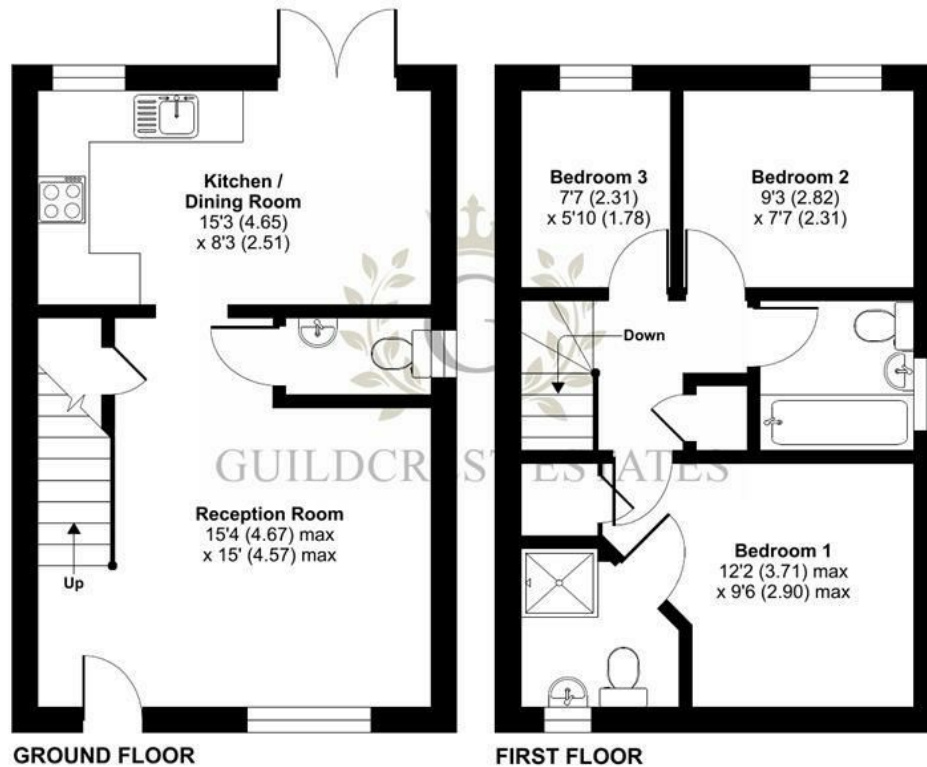
Council Tax Band C.  
Service Charge £256.63 per annum.  
Gas, water, electric, sewer mains  
Gas central heating  
Freehold



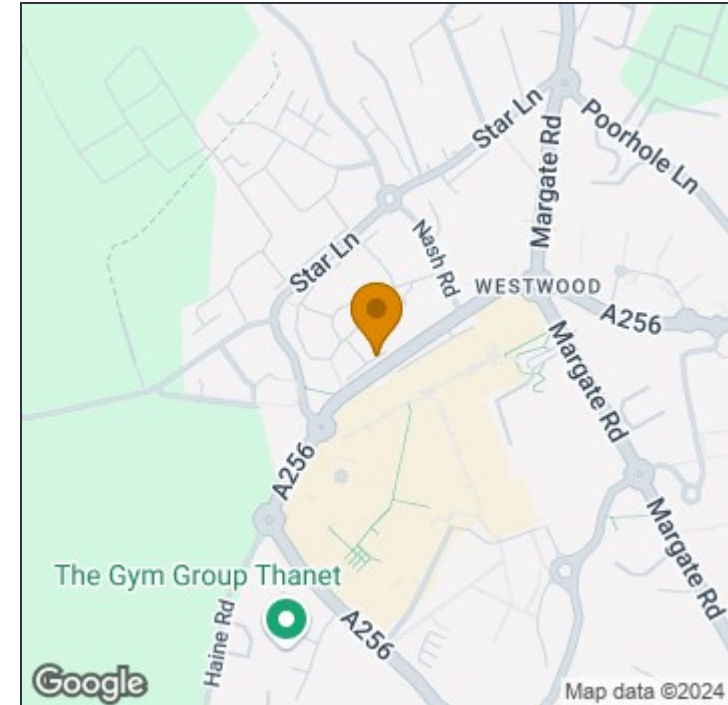
## Bishop Close, Margate, CT9

Approximate Area = 736 sq ft / 68.4 sq m

For identification only - Not to scale



GUILDCREST ESTATES



### Disclaimer

These particulars, whilst believed to be accurate are set out as a general outline only for guidance and do not constitute any part of an offer or contract. Intending purchasers should not rely on them as statements of representation of fact, but must satisfy themselves by inspection or otherwise as to their accuracy. No person in this firm's employment has the authority to make or give any representation or warranty in respect of the property.



Floor plan produced in accordance with RICS Property Measurement Standards incorporating International Property Measurement Standards (IPMS2 Residential). © nichecom 2024. Produced for Guildcrest Estates Ltd. REF: 1069849.

### Manston

1 The Laurels Manston Business Park, Ramsgate,  
Kent, CT12 5NQ

T: 01843 272 200

[sales@guildcrestestates.co.uk](mailto:sales@guildcrestestates.co.uk)

<https://www.guildcrestestates.co.uk>